



ALTAI
R E S O U R C E S I N C .

CORPORATE PRESENTATION

June 2008



DISCLAIMER

Safe Harbor disclaimer: Certain statements contained herein constitute forward-looking statements within the meaning of Section 27A of the Securities Act and Section 21E of the Exchange Act. Such statements include, without limitation, statements regarding business and financing plans, business trends and future operating revenues and expenses. Although the company believes that the statements are reasonable, it can give no assurance that such expectations will prove to be correct. Forward-looking statements are typically identified by the words: believe, expect, anticipate, intend, estimate and similar expressions, or which by their nature refer to future events. The company cautions investors that any forward-looking statements made by the company are not guarantees of future performance, and that the actual results may differ materially from those in the forward-looking statements as a result of various factors, including but not limited to, the company's ability to produce metals or minerals from its properties successfully or profitably, to continue its substantial projected growth, or to be able to fully implement its business strategies.



Shares Outstanding:

41.2 million

Major Shareholders:

Directors	approx.	7.5 million
Brownstone Ventures et al	approx.	5.5 million
Sprott Asset Management	approx.	5.0 million
MMCAP International	approx.	2.0 million

Stock Symbol: ATI

Working Capital:

\$ 5.8 million

Altai Resources Inc. has multiple, substantial resource opportunities that will greatly increase shareholder value

Gas & Oil Exploration

Mineral Exploration





ALTAI
R E S O U R C E S I N C .

150 000N
145 000N
150 000N
135 000N
130 000N
125 000N
120 000N

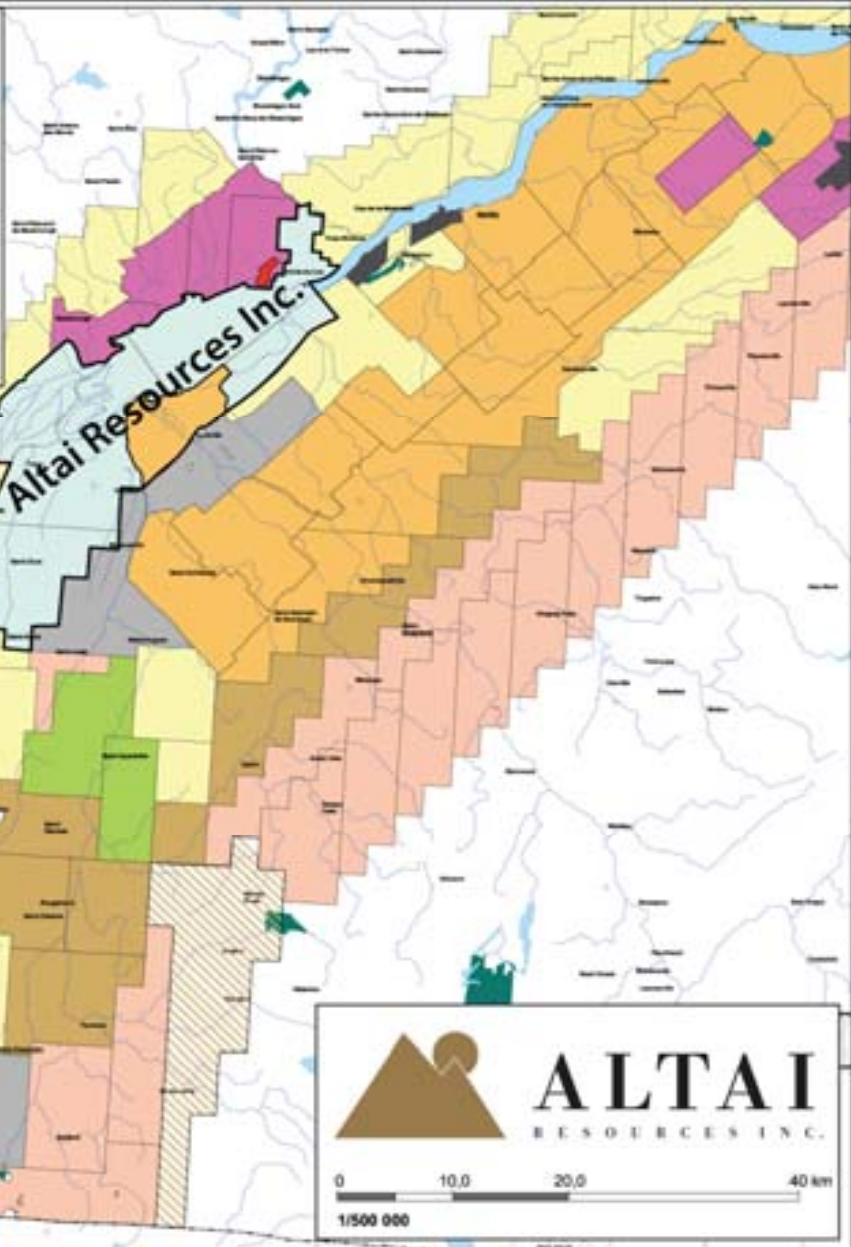
GAS and OIL EXPLORATION
St. Lawrence Lowlands, Quebec



FOREST OIL DISCOVERY

- on April 1, 2008, Forest Oil announced it had successfully fracture stimulated and tested two vertical wells drilled in the Utica shale formation in the St. Lawrence Lowlands between Québec City and Montréal
- the St. Francois-du-Lac well tested at a flow rate of up to 1 mmcf/day
- the rock properties are comparable to the Barnett Shale in Texas which produces 3.5 Bcf/day

- | | |
|-----------------------------------|----------------------------------|
| 9161-7785 Québec Inc. | Pétrolia inc |
| Altai Resources Inc. | Pétrolympia Inc. |
| Corridor Resources Inc. | Prospection 2000 inc. |
| Gastem inc. | Questerre Energy Corporation |
| Bertrand Brassard | Ressource & Énergie Squatex inc. |
| Intragaz Exploration, Sec | Talisman Energy Inc. |
| Junex inc. | En cours de délivrance |
| Les Mines J.A.G. Ltée | Bail d'exploitation |
| Molopo Canada Inc | NJ & Exploration Inc. |
| Mundiregina Resources Canada Inc. | |

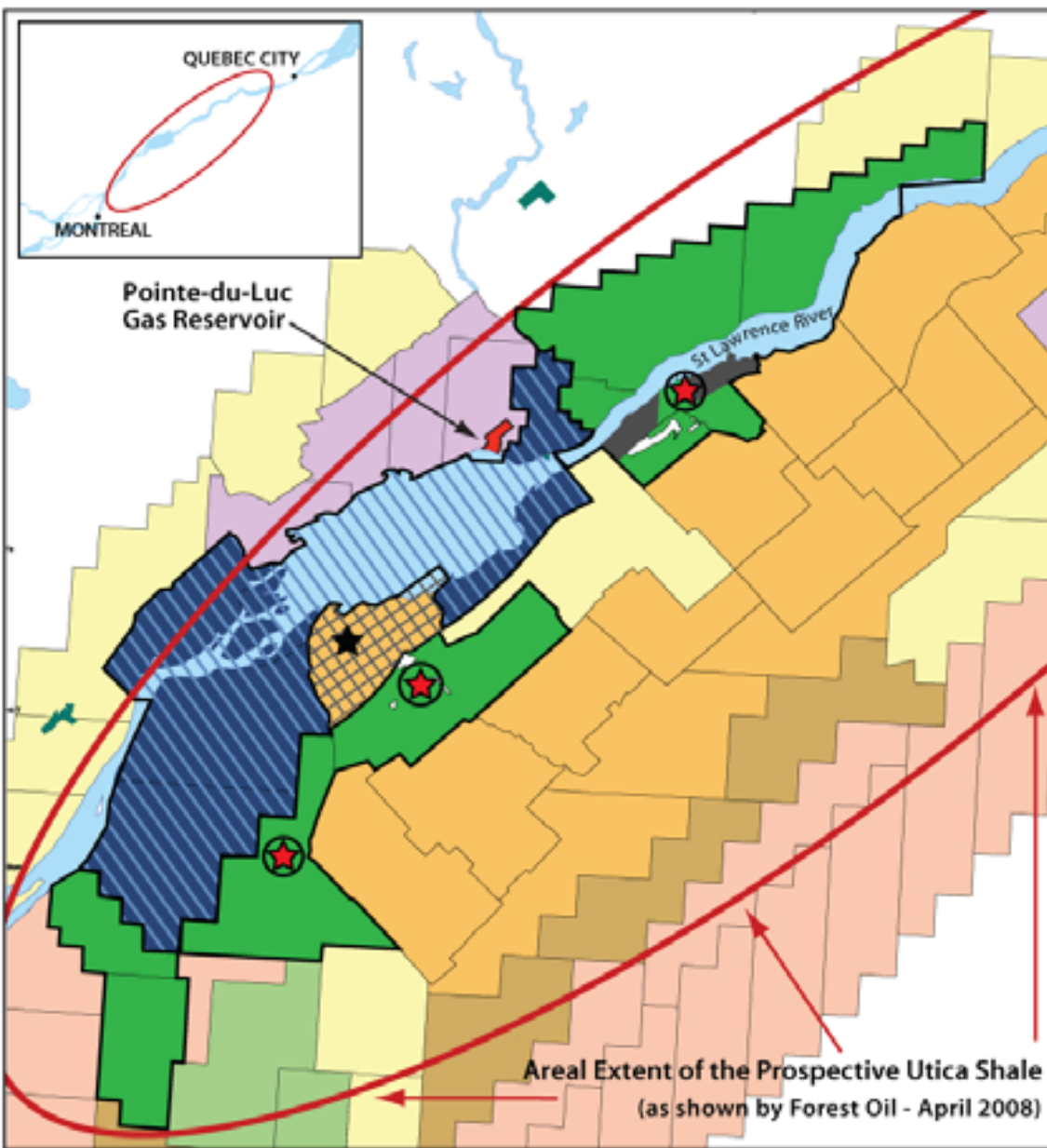


ALTAI
RESOURCES INC.

0 10,0 20,0 40 km
1/500 000



Pointe-du-Luc
Gas Reservoir



ALTAI

RESOURCES INC.

(ATI - TSX.V)

Utica Shale Gas Play
St. Lawrence Lowlands, Quebec

-  ALTAI Resources Inc.
-  ALTAI Resources Inc.
15% Gross Royalty
-  Forest Oil
Interest Well
-  Talisman Energy
Oil & Gas Well
-  Forest Oil Corporation
-  Talisman Energy Inc.

Areal Extent of the Prospective Utiqa Shale
(as shown by Forest Oil - April 2008)

0 10 20 40km
1/500 000

ALTAI RESOURCES - PREVIOUS EXPLORATION

- 1985/87 - 735 km of marine seismic (shallow)
- 1988 - 2 wells drilled on the lake - 2 gas discoveries
- 1989/94 - 379 km of seismic (shallow)
- 1997 - 92 km of ground seismic (shallow)
- 2000/01 – 22.5 km of ground seismic (deep)
- 2002 - a detailed exploration programme is outlined indicating the various shallow and deep objectives (by P. Laroche)
- 2003 - an independent valuation of the properties is done
- 2004 – entered into earn-in agreement with Talisman Energy
- 2006 - Talisman drilled first earn-in well with good oil & gas shows
- 2007 - Talisman returns 3 of the 4 optioned properties
- 2008 – a seismic reflection survey is conducted with an orientation to deep gas targets

A total of \$4.5 million has been spent on exploration to date



B.C. / ALTA / SASK
Petroleum Regions

QUÉBEC
Future Petroleum Region

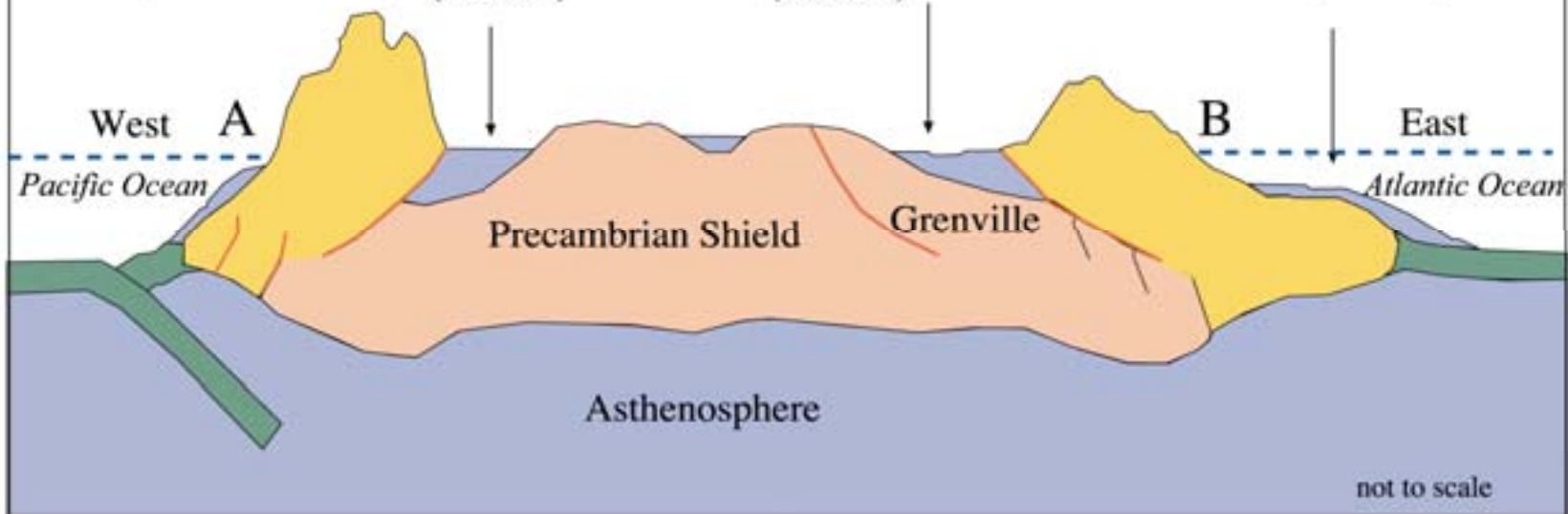
Western
Cordilleras
(Paleo - to Cenozoic)

Western
Platform
(Paleozoic)

St. Lawrence
Lowlands
(Paleozoic)

Appalachians
(Paleozoic)

Continental
Shelf
(Mesozoic)





ALTAI
RESOURCES INC.





EXPLORATION POTENTIAL

- **UTICA SHALE GAS**

Barnett Analogue – 3.5 Bcf/d gas

- **TRENTON-BLACK RIVER GAS & OIL – Deep**

Albion – Scipio Analogue – 130 mln bbls oil & 200 Bcf gas

- **GAS PRODUCTION & STORAGE – Shallow**

Pointe-du-Lac Analogue – 2.8 Bcf gas





ALTAI
RESOURCES INC.

SOREL/TROIS-RIVIERES PROPERTY
Gas Production & Storage

Altai
(tested 1.3 mmcf/d in 1988)

Junex/Forest
Beaucour #8

Altai
(gas shows, not tested)

ALTAI
PSP-1

ALTAI
PSP-2

Talisman / Altai
(showed Utica Shale gas)

Gastem/Forest
St. Francois #1
(tested 1mmcf/d)

Gastem/Forest
St. Louis #1



LEGEND

- Altai Resources Inc.
- Talisman / Altai
- Seismic Lines
- Wells < 500 feet in depth (MRN compilation)
- Wells > 500 feet in depth (MRN compilation)
- 22 Structures - Gas Production & Storage Potential
- Pointe-du-Luc Gas Reservoir



ALTAI
RESOURCES INC.

SOREL/TROIS-RIVIERES PROPERTY
Collapse Zone - Top of Trenton

0 2 4 6 8 10km

Altai 1988
(tested 1.3 mmcf/d in)

Junex/Forest
Becancour #8

Altai
(gas shows, not tested)

ALTAI
PSP-1

ALTAI
PSP-2

Gastem/Forest
St.Francois #1
(tested 1mmcf/d)

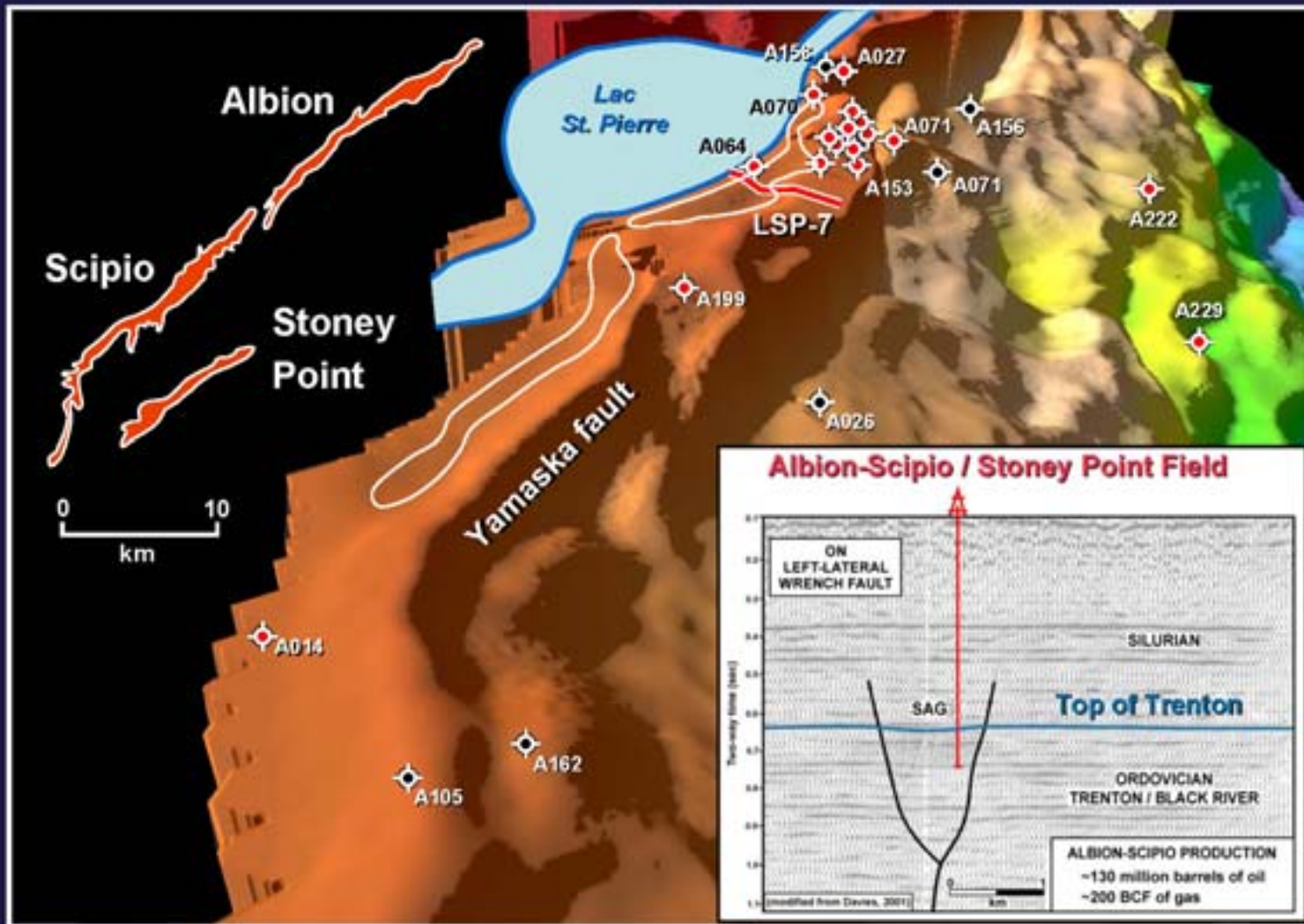
Talisman/ Altai
(showed Utica Shale gas)

Gastem/Forest
St. Louis #1

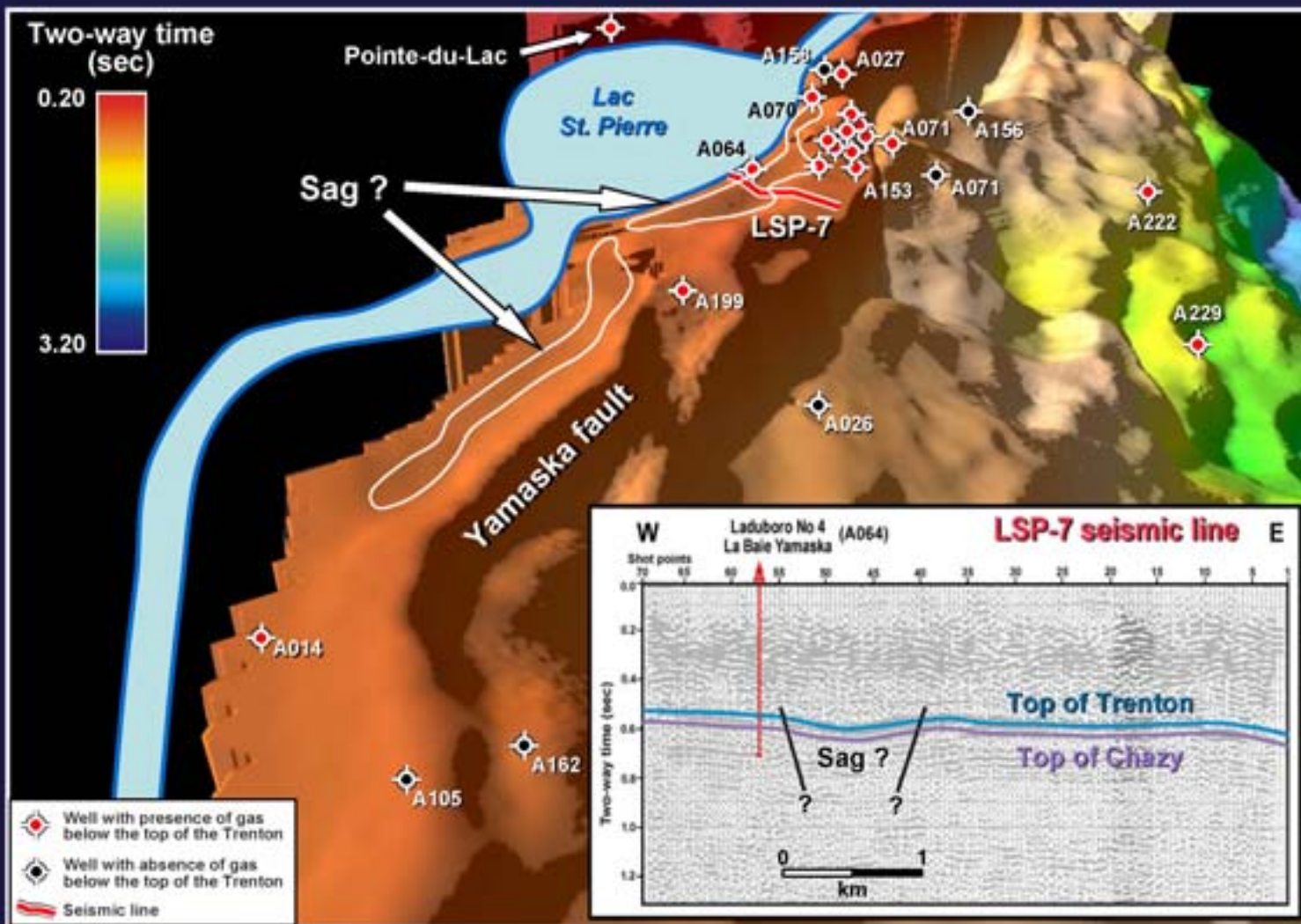
LEGEND

- MAJOR FAULTS
- SECONDARY FAULT OR FRACTURE
- COLLAPSE ZONE - 32km x 1km
- SYNCLINAL AXIS
- ALTAI RESOURCES INC.
- GAS SHOWING
- SHALLOW < 100M OR NO DATA
- POINTE-DU-LUC GAS RESERVOIR

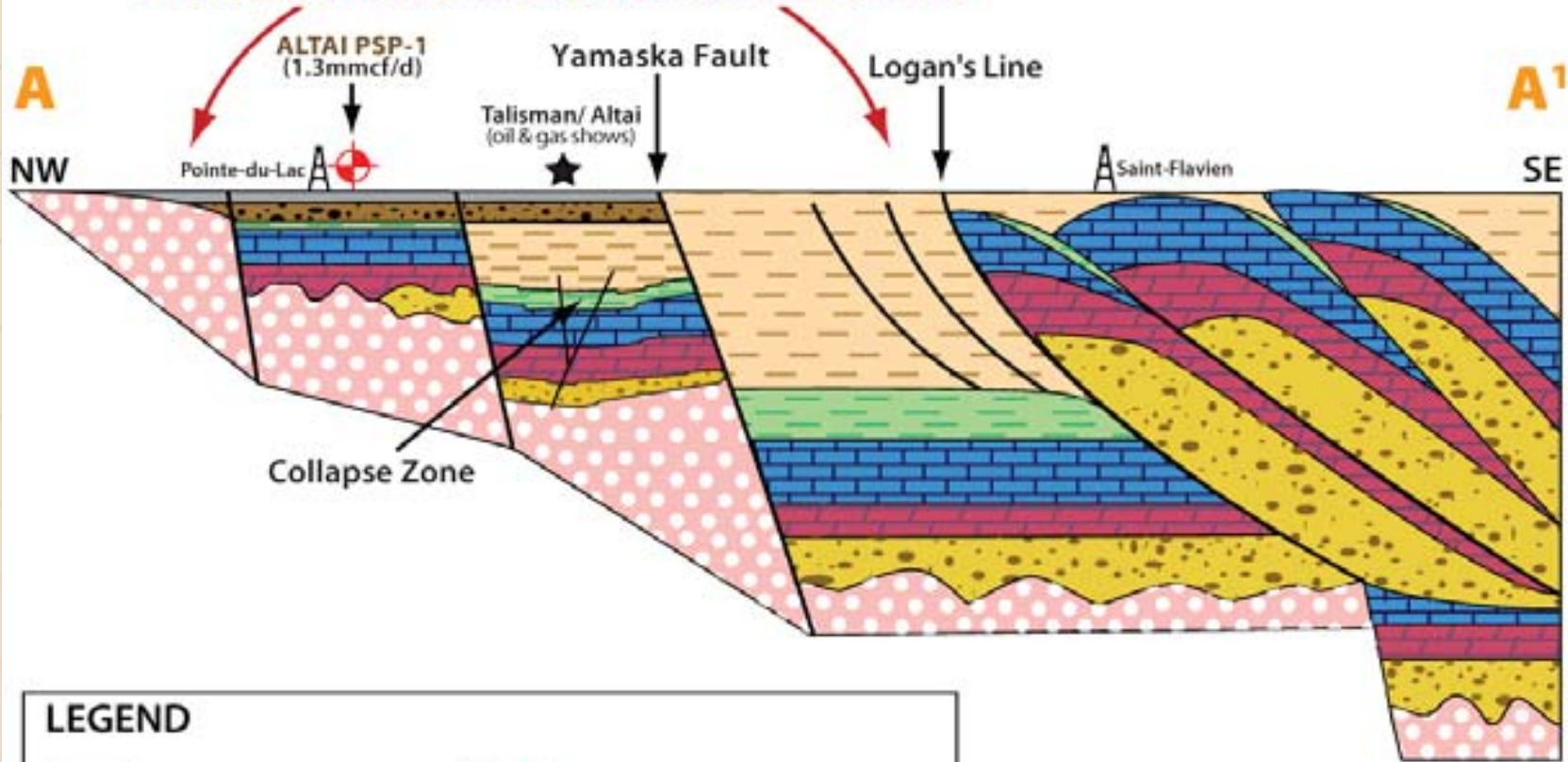
Albion - Scipio analogue



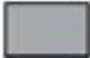





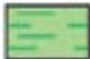


Lac St. Pierre sector




Areal Extent of Altai Resources Inc. Permits



LEGEND

- | | |
|--|--|
|  Clay |  Beekmantown Dolomites |
|  Quarternary Deposit |  Potsdam Sandstone |
|  Lorraine Flysch Facies |  Basement |
|  Utica Shale |  Fault |
|  Trenton Black River | |



ALTAI
RESOURCES INC.

Simplified Geological Cross Section
South of Altai PSP - 2 Well
Looking North



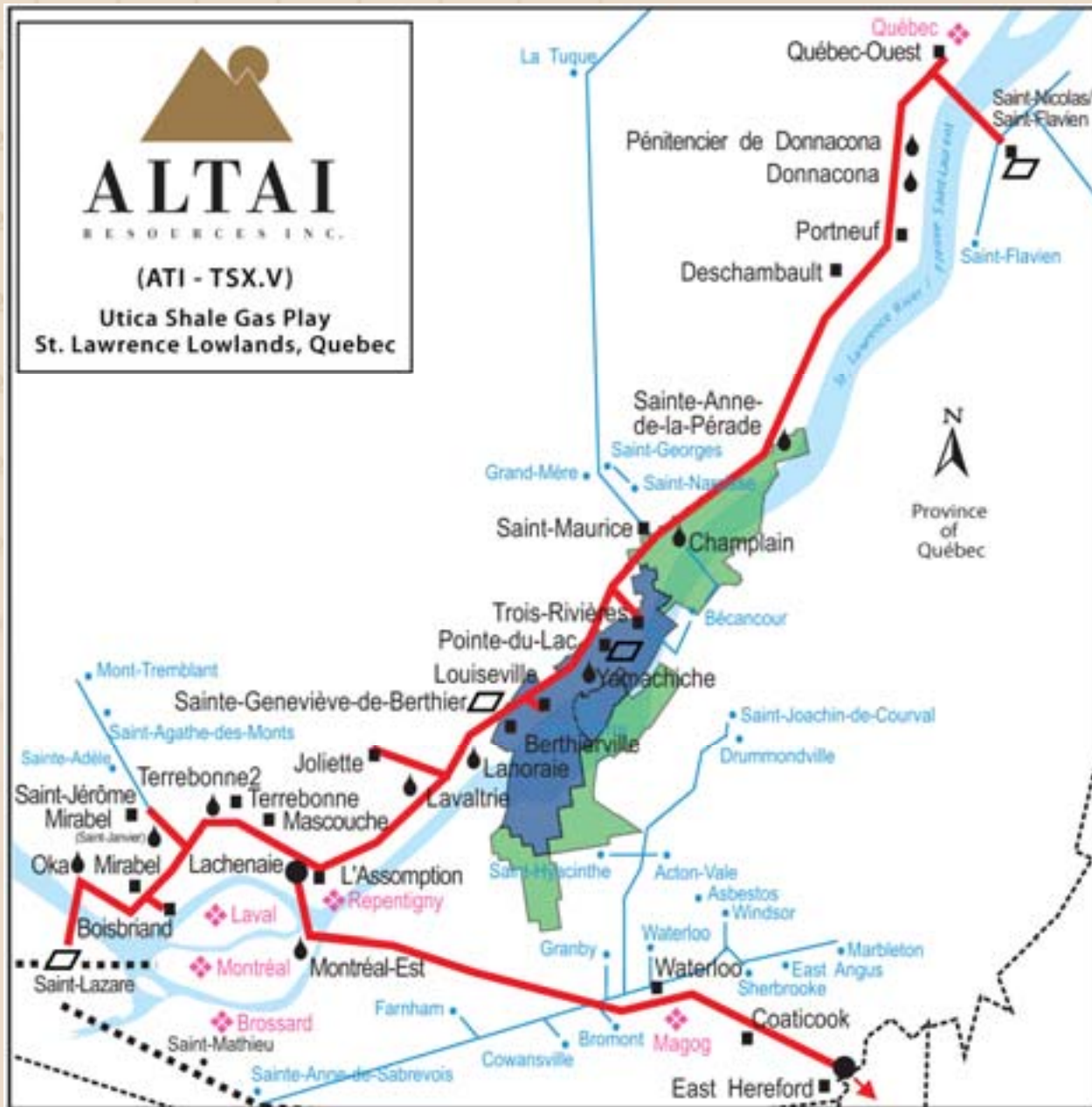
Utica Shale - Excellent Rock Properties

	Utica	Barnett
Depth (ft)	2,300 - 6,000	4,500 - 9,000
Thickness (ft)	500	150 - 700
Clay Content (%)	15 -26	15 -26
Total Organic Content (%)	1.0 - 3.1	3.5 - 5.0
Gas-Filled Porosity (%)	3.2 - 3.7	3.0 - 4.8
Pressure Gradient (psi/ft)	0.45 - 0.60	0.46 - 0.50
Maturity (Ro)	1.3 - 2.0	1.0 - 2.2
Gas Price (\$)	NYMEX + 1.05	NYMEX - 0.53



(ATI - TSX.V)

Utica Shale Gas Play
St. Lawrence Lowlands, Quebec



TQM Natural Gas Transportation System

- TQM Pipeline System
- TQM Pipeline Meter Station
- TQM Pipeline Delivery Point
- TQM Pipeline Receipt Point
- TQM Pipeline Compressor Station
- TransCanada Pipelines System
- Gaz Metro System
- City
- Altai Resources Inc.
- Forest Oil Corporation

EVENTS SCHEDULED FOR SUMMER, 2008

- **FOREST OIL INTENDS TO DRILL THREE HORIZONTAL WELLS TO CONFIRM THE CONCEPT PLAY**
- **TALISMAN PLANS TO ANNOUNCE ITS DRILLING PROGRAM FOR THE ST. LAWRENCE LOWLANDS**
- **JUNEX IS SCHEDULED TO START DRILLING AN EXPLORATION WELL BEFORE JULY, 2008**
- **PETROLYMPIC PLANS TO DRILL THREE SHALLOW WELLS**
- **ALTAI INTENDS TO MAKE A NUMBER OF DECISIONS FOR PROCEEDING WITH ITS GAS & OIL PERMITS AND MINERAL DEPOSITS**



ALTAI
R E S O U R C E S I N C .

MINERAL EXPLORATION

Canada and The Philippines



CANADA

- holds a 50% interest in the Malartic Gold Property, Ontario
- currently 100% of the property has been optioned out for a combination of cash payments and shares, retaining a 3% gross metal royalty and a 10% net profits royalty
- a historical (non 43-101 compliant) probable resource of 466,342 tonnes grading 7.11 g/t gold (513,909 tons grading 0.21 oz/ton gold) exists to a depth of 200 meters (600 feet)
- property located only 7 km from the Camflo mill

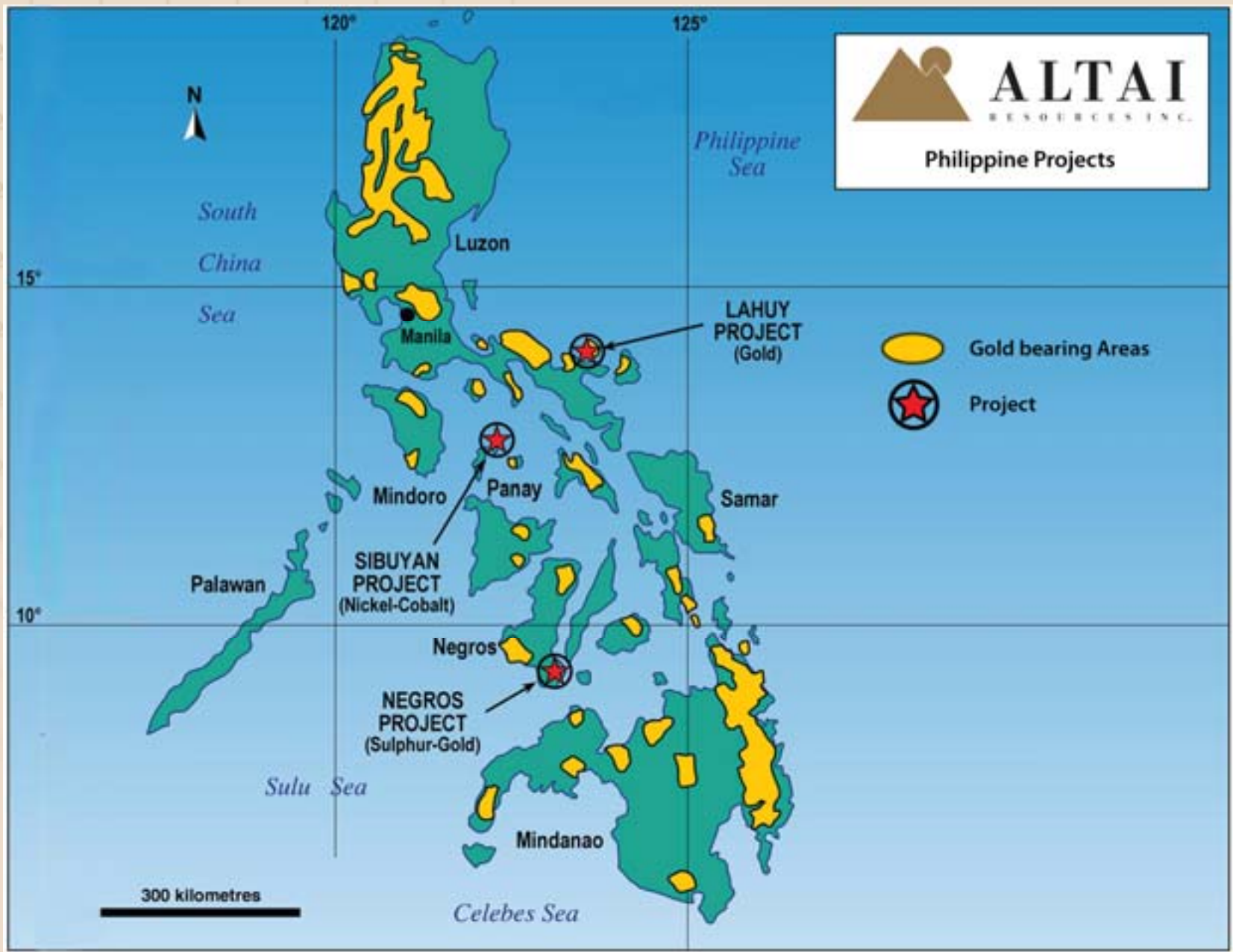
THE PHILIPPINES

- has a 40% equity interest in Altai Philippines Mining Corporation (“Altai Philippines”) and a direct 10% Net Smelter Return (NSR) royalty in all properties
- Altai may elect to give up its 10% NSR interest in return for building and owning 80% of the ore processing facilities; then the Company will buy the ore from Altai Philippines by paying a royalty equal to 10% of the direct mining costs of the ore delivered to the processing facilities. Altai Philippines will then have 20% ownership of the processing plant
- If the properties are joint-ventured, leased or sold to a third party, 60% of residual proceeds will accrue to the Company until it recovers its expenditures and 40% to Altai Philippines. After recovery of the Company’s expenditures, proceeds will be shared equally



ALTAI
RESOURCES INC.

Philippine Projects





NEGROS SULPHUR/GOLD PROJECT

- 4,052 hectares located 3 km from tidewater with 178 drill holes totaling approximately 24,500 meters**
- historical (non 43-101 compliant) 59 million tonnes of mineable resources and 24 million tonnes of drilled indicated resources for an aggregate of 83 million tonnes**
- averaging 30% sulphur in native and sulphide form mineable by open pit**





SIBUYAN LATERITIC NICKEL-COBALT PROJECT

- 1,888 hectares at tidewater with a historical (non 43-101 compliant) resource of 19 million tonnes averaging 1.3% nickel at cut-off grade of 1% and about 1 lb. cobalt**
- optioned out for a \$1.3 million payment to be received within 6 months of the Philippine government approval of a Mineral Production Sharing Agreement (“MPSA”)**





LAHUY GOLD PROJECT

- 1377 hectares with a historical (non 43-101 compliant) resource of approximately 600,000 tonnes grading 13 grams/t gold
- potential for up to 5 million – 10 million tonnes of an unknown grade



INVESTMENT CONSIDERATIONS

- **Diversified Portfolio of Properties in Canada and the Philippines**
- **Excellent Potential for Gas & Oil Production as well as Significant Revenue Potential from Underground Storage**
 - **Largest 100% Owned Land Package (114,252 hectares) situated in the Heart of the Utica Shale Gas play**
 - **15% Gross Royalty on Talisman's Earned-In Permit (13,290 hectares)**
- **Value of Mineral Deposits Have Increased Substantially**
 - **i.e. Negros Sulphur Deposit is One of the Largest in Asia**
- **Substantial Working Capital - \$ 5.8 Million Cash with No Debt**

Outlook for 2008

An Advantageous Farm Out with a Major Oil Company
Potential JVs or Spin-Offs of Mining Projects
A Potential Take-Over Target